



Arriving by bus to the Musée d'art contemporain de Montréal

Accessibility user guide:
For people with specific needs



Crédit : Félix Rioux, 2022

Contents

**Preparing for a visit to the Musée d'art contemporain
de Montréal.....3**

How to use this document? 3

How to get to the Musée?..... 4

Coming to the Musée by bus 5

René-Lévesque/Mansfield stop 5

René-Lévesque/Bourassa stop 8

Preparing for a visit to the Musée d'art contemporain de Montréal

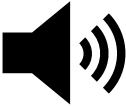
How to use this document?

This document is a user guide. It combines texts written in plain language with images. It helps you prepare for a visit to the Musée.

The user guide uses symbols.

Here is what the symbols mean:

- If there is a lot of **noise**



- If there is a lot of **light**.....



- If there are **visual stimuli**



- If there are **smells**.....



- If there are lots of **people**

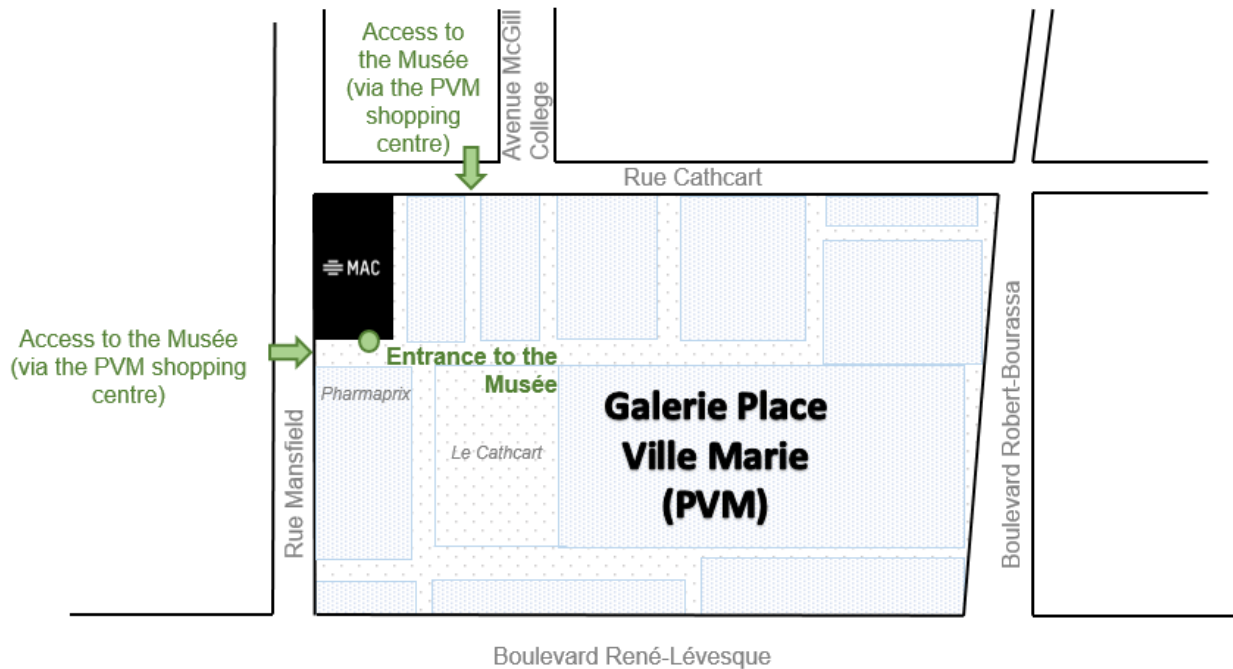


- If you are **not allowed to touch the works**



How to get to the Musée?

The Musée d'art contemporain de Montréal is located in a **shopping centre called Place Ville Marie, or PVM**. It is situated at the corner of **rue Mansfield** and **rue Cathcart**. You can get to the Musée by two entrances to the shopping centre.



Access via rue Mansfield



Access via rue Cathcart

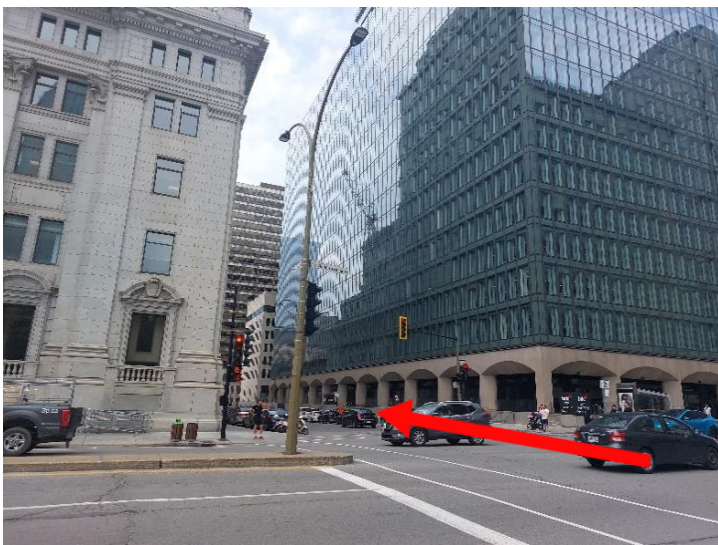
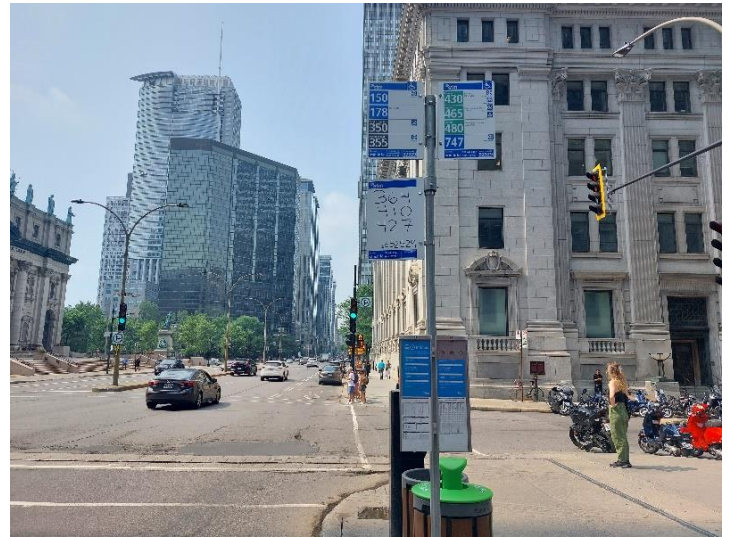
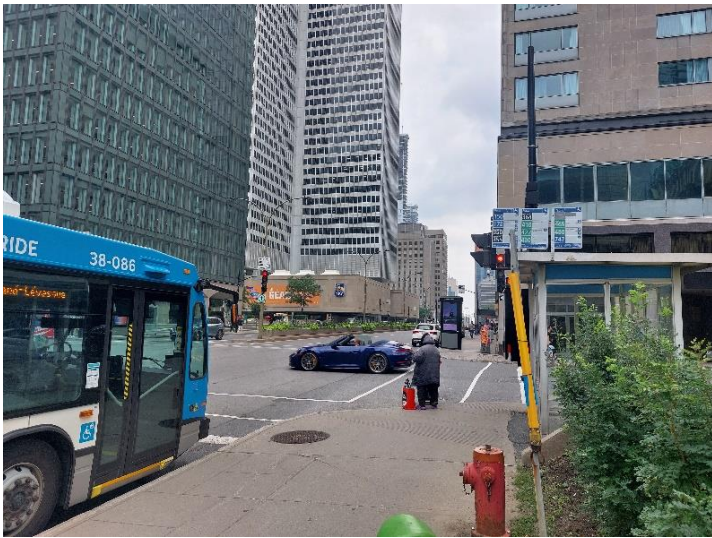


There is lots of traffic in the area. The streets are noisy.

René-Lévesque/Mansfield bus stop

You arrive on bus 150, 178, 350, 355, 358, 364, 410, 427, 430, 465, 480 or 747. Get off at the **René-Lévesque/Mansfield bus stop**.

It's about a 3-minute walk to the Musée.



Take **Mansfield Street**.

Walk alongside the stone arches.

Boulevard René-Lévesque can be noisy. There are lots of cars.





Continue along rue Mansfield.

You should see Mount Royal at the far end.



The Musée is on your right on rue Mansfield. You will recognize it by the **“MAC”** logo on the doors.

The entrance to the museum is in the **Galerie PVM**. PVM means “Place Ville Marie.” It is a shopping centre.



Option 1: You can take the stairs.



Option 2: You can take the ramp.



The entrance to the Musée is on your left in the hall. The name **“Musée d’art contemporain de Montréal”** is written above it.

The hall may be noisy. There are often lots of people.



René-Lévesque/Bourassa bus stop

You arrive on the 445 bus.

Get off at the **René-Lévesque/Bourassa stop**.

It's about a 5-minute walk to the Musée.



Take **boulevard René-Lévesque Ouest**. Walk towards the building with the blue windows and stone arches.

Boulevard René-Lévesque can be noisy. There are lots of cars.





Walk straight ahead to **Rue Mansfield**.



Then turn right onto **Rue Mansfield**.

You should see Mount Royal at the far end.



The Musée is on your right on rue Mansfield. You will recognize it by the **“MAC”** logo on the doors.

The entrance to the museum is in the **Galerie PVM**. PVM means “Place Ville Marie.” It is a shopping centre.



Option 1: You can take the stairs.



Option 2: You can take the ramp



The entrance to the Musée is on your left in the hall. The name **"Musée d'art contemporain de Montréal"** is written above it.

The hall may be noisy. There are often lots of people.

